



Phase25 Updates

Version 8 – March 27, 2025



Small Business Software Built with Enterprise DNA

Copyright © 2006 – 2025 Phase25, LLC ~ All Rights Reserved

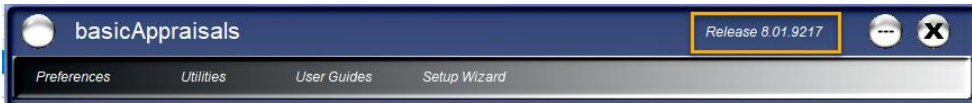
Table of Contents

Phase25 Updates for March 2025	3
New Feature: Update Reports	3
New Feature: Custom Report Settings/Report Images	5
Performance Upgrades.....	6

Phase25 Updates for March 2025

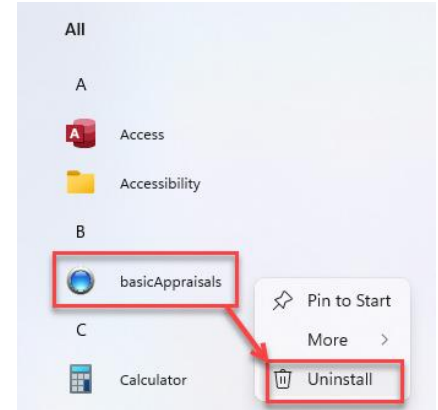
Below are updates available in the latest version of this application:

- **basicAppraisals v8.01.9217** or higher



If your installed version is older, please download the latest version from <https://basicAppraisals.com>, and follow these instructions to update your application:

- On your Start Menu, right-click on the **basicAppraisals** icon and choose **Uninstall**
- Refer to the **basicAppraisals Quick Start Guide** if you need assistance in how to extract the downloaded installer and run it.
- **NOTE:** None of your previous settings, data or preferences will be changed.

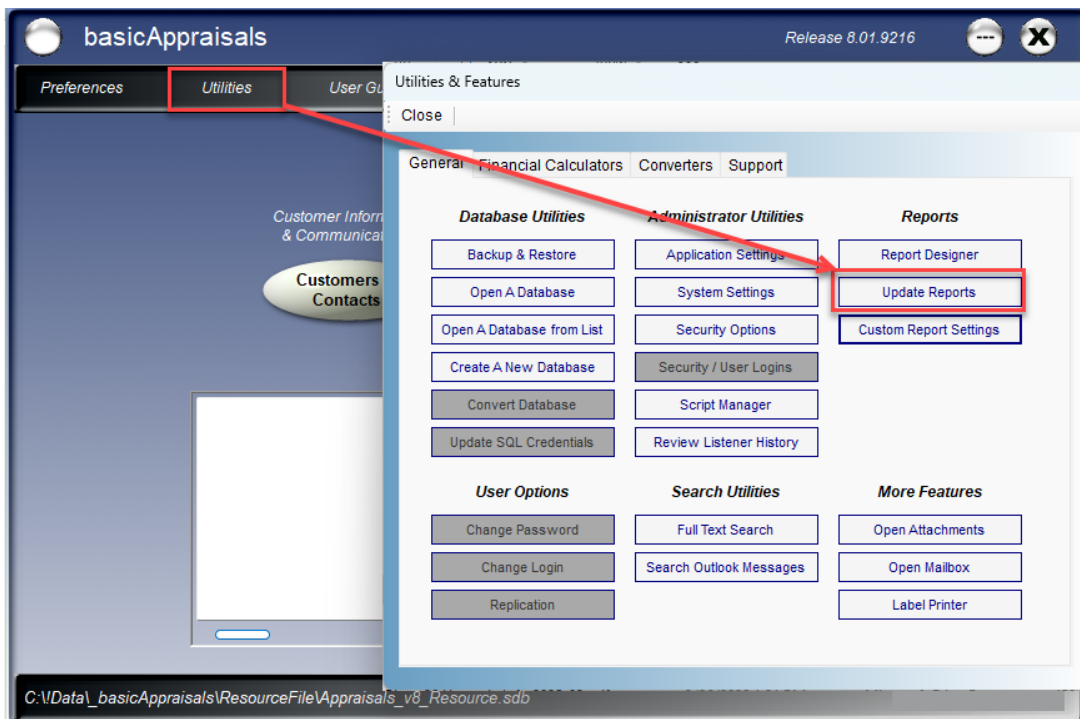


New Feature: Update Reports

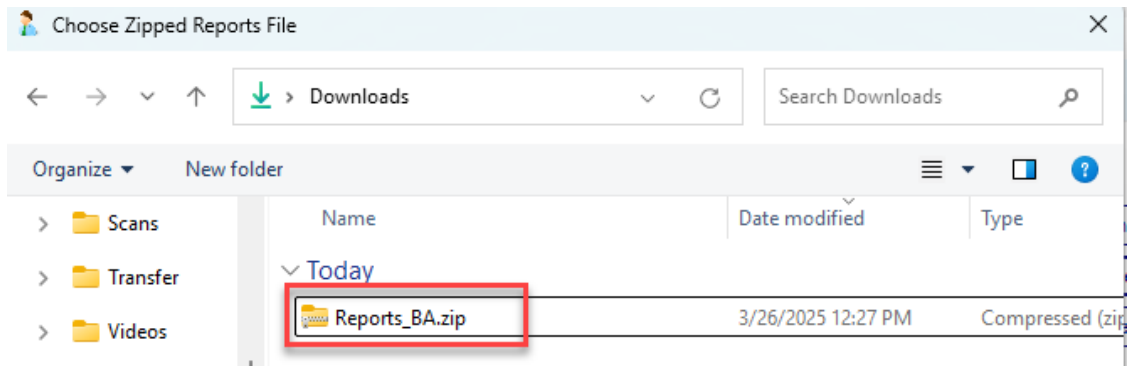
When basicAppraisals creates a new database a set of default report templates are added to the System Reports table. These reports can be copied and the copies edited to make any changes you would like (see the **Phase25 Report Designer Guide**).

If you want to restore the original reports, including new report designs that have been added since your database was created, this new feature will automatically import a full set of Reports. Please follow these steps:

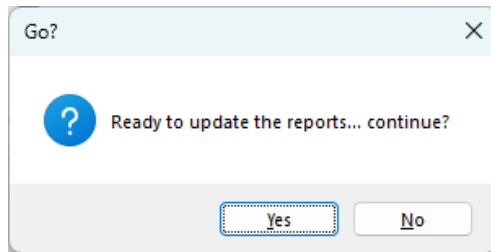
- Download the **Reports_BA.zip** file from <https://basicAppraisals.com>.
- On the Main Menu, click on **Utilities**, then click on the new button **Update Reports**.



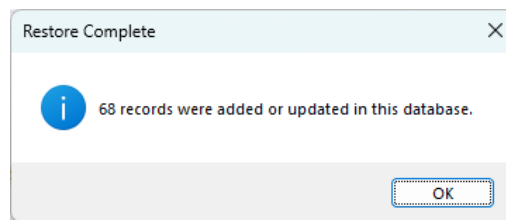
- Browse to the downloaded file and click **Open** to select it.



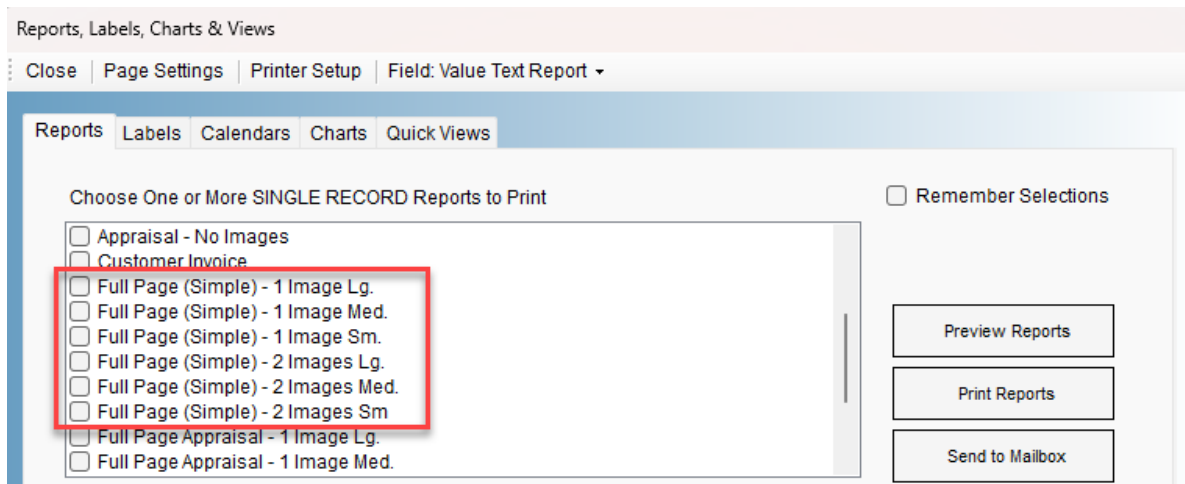
- A prompt will confirm you want to continue; click **Yes** to run it, **No** to cancel.



- The utility runs and displays the results when finished:



All original reports that were in your database are updated with any changes, and all new reports are also added. Below are the new reports that are now included with the newest version of **basicAppraisals**:



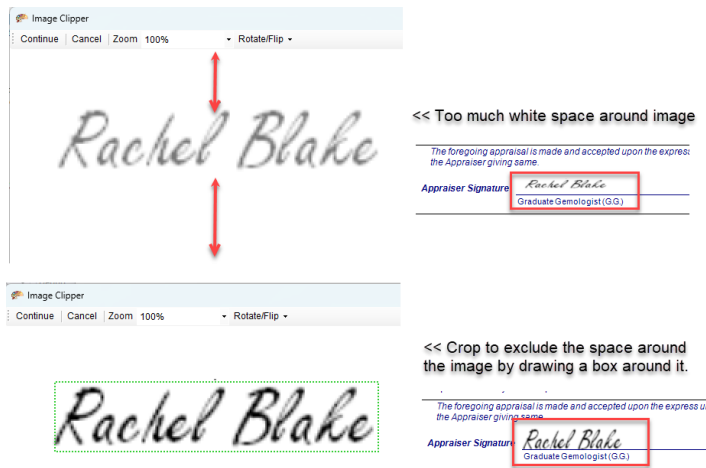
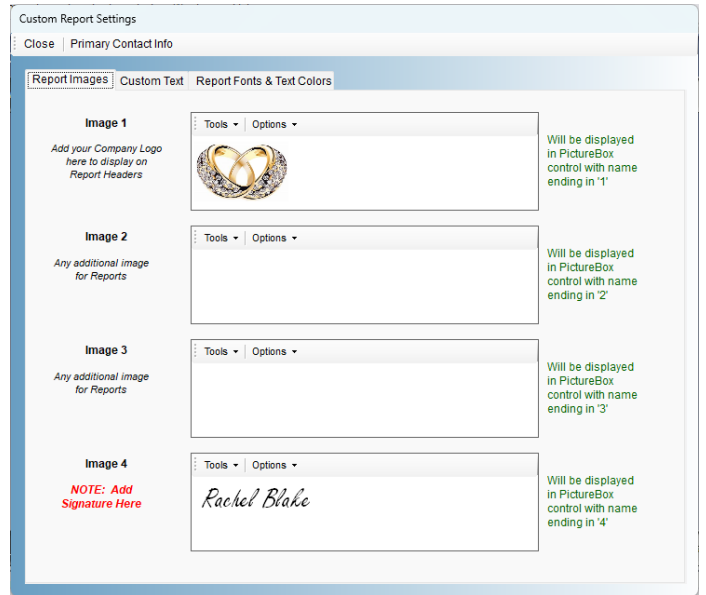
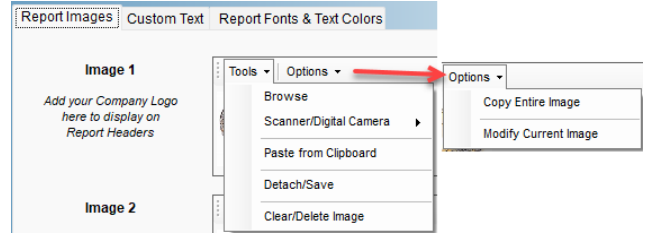
NOTE: Whenever we add new reports for your application they will be made available on our website. There will be a date and version requirements note by the link to download the .zip file. As a licensed user, you can download and run this updater any time to add more reports or new features to existing reports in your database.

New Feature: Custom Report Settings/Report Images

The Custom Reports Settings “Report Images” tab has been updated to use the same image controls that you see on forms. These controls have integrated features for adding images, and modifying them as well.

Use the **Options >> Modify Current Image** feature to trim the white space from these images. See the Signature example below.

Why is this important? The image control on the report includes ALL of the image, even the white space around the signature. When you trim that off, just the signature itself fills the control.



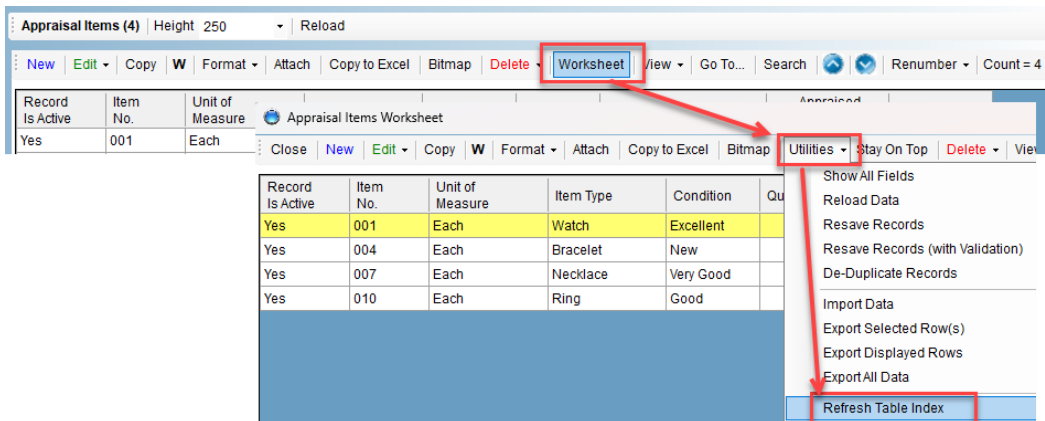
Performance Upgrades

basicAppraisals has the capacity to store a lot of data! The digital images can take up a lot of space in the database, and make loading the Appraisals navigator slow. In previous versions, when adding images to the Appraisal Items records, the images were NOT resized to reduce them. For example, an image from a digital camera or phone can be 2MB or more in size, when a much smaller resolution image would work just as well.

Version 8.1 has a built in “reducer” to resize images as they’re imported into the record. However, any data from previous versions that are imported using the **Setup Wizard** import feature may still contain very large images, which then impact the speed at which records are opened and edited.

A number of changes have been made to improve the performance, even with a lot of large-memory records in the database:

- Custom indexing of the Appraisal Items table – **This is automatically refreshed every 30 days just to ensure it’s in working order, so NO ACTION IS NEEDED.** However, in the event these indexes become correct (can happen, but unlikely), the Refresh utility can be run manually from the Appraisal Items worksheet:
 - Click **Worksheet** on the Appraisal Items toolbar
 - Click **Utilities** on the worksheet’s toolbar, and choose **Refresh Table Index** to run the utility.



NOTE: This utility is only run and/or available on worksheets that load “child” records, such as Appraisal Items and Contact Notes.

All Phase25 products and materials are protected by copyright laws and international copyright treaties, as well as other intellectual property laws and treaties. See our full EULA (End-User License Agreement) on our website at <https://phase25.com/support/>.

